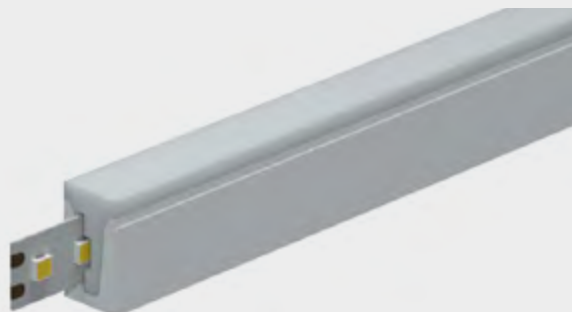
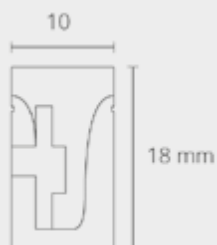


NOVA
 TWIX


DIMENSIONI <i>DIMENSIONS</i>	10x18 mm
DESTINAZIONE D'USO <i>INTENDED USE</i>	Indoor/Outdoor
CAVO DI ALIMENTAZIONE <i>POWER CABLE</i>	Uscita posteriore <i>Rear exit</i>
INSTALLAZIONE <i>INSTALLATION</i>	Fissaggio parete/plafone <i>Fixing method</i>
FISSAGGIO <i>FIXING</i>	Adesivo <i>Adhesive</i>
CORPO/STRUTTURA <i>STRUCTURE</i>	PVC e Silicone <i>PVC and silicon</i>
TENSIONE <i>TENSION</i>	12/24 Vdc
FASCIO <i>BEAM OF LIGHT</i>	Simmetrico diffondente 120° <i>Symmetrical diffusive 120°</i>
CLASSE ISOLAMENTO <i>INSULATION CLASS</i>	Classe 3 <i>Class 3</i>
PESO <i>WEIGHT</i>	0,260 gr
GRADO IP <i>IP GRADE</i>	65
LUNGHEZZA MASSIMA <i>MAXIMUM LENGHT</i>	20 m
TIPO LED <i>LED TYPE</i>	SMD LED
TAPPO <i>CAP</i>	Completamente a scomparsa <i>Fully concealed</i>

STRIP LED COMPATIBILI <i>COMPATIBILITY WITH LED STRIPS</i>				
W/MT	COLORE <i>COLOUR</i>	LED/MT	LUMEN/MT	DC
8 W	3000 K	120	1450	24 V
8 W	4000 K	120	1490	24 V
8 W	6000 K	120	1530	24 V
12 W	3000 K	120	1390	24 V
12 W	4000 K	120	1430	24 V
12 W	6000 K	120	1470	24 V
16 W	3000 K	120	2650	24 V
16 W	4000 K	120	2685	24 V
16 W	6000 K	120	2745	24 V

TRASFORMATORI COMPATIBILI <i>COMPATIBLE TRANSFORMERS</i>			
IP	CONSUMO <i>CONSUMPTION</i>	TENSIONE <i>TENSION</i>	DIMENSIONI <i>DIMENSIONS</i>
67	30 W	24 V	218x30xh20 mm
67	60 W	24 V	208x72xh45 mm
67	100 W	24 V	240x72xh45 mm
67	150 W	24 V	240x72xh45 mm
67	200 W	24 V	230x120xh54 mm