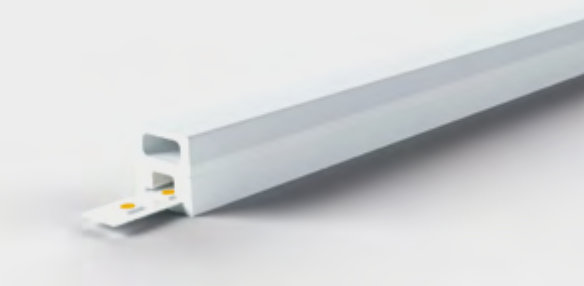
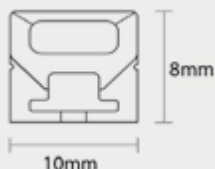


NOVA
 MOOVE.URBAN TOWER


DIMENSIONI <i>DIMENSIONS</i>	10x8 mm
DESTINAZIONE D'USO <i>INTENDED USE</i>	Indoor
CAVO DI ALIMENTAZIONE <i>POWER CABLE</i>	Uscita posteriore <i>Rear exit</i>
INSTALLAZIONE <i>INSTALLATION</i>	Fissaggio parete/plafone <i>Fixing method</i>
FISSAGGIO <i>FIXING</i>	Adesivo <i>Adhesive</i>
CORPO/STRUTTURA <i>STRUCTURE</i>	PVC e Silicone <i>PVC and silicon</i>
TENSIONE <i>TENSION</i>	24 Vdc
FASCIO <i>BEAM OF LIGHT</i>	Simmetrico diffondente 120° <i>Symmetrical diffusive 120°</i>
CLASSE ISOLAMENTO <i>INSULATION CLASS</i>	Classe 3 <i>Class 3</i>
PESO <i>WEIGHT</i>	0,300 gr
GRADO IP <i>IP GRADE</i>	20
LUNGHEZZA MASSIMA <i>MAXIMUM LENGHT</i>	5 m
TIPO LED <i>LED TYPE</i>	SMD LED
TAPPO <i>CAP</i>	Completamente a scomparsa <i>Fully concealed</i>

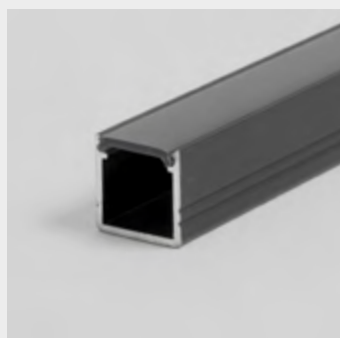
STRIP LED COMPATIBILI <i>COMPATIBILITY WITH LED STRIPS</i>				
W/MT	COLORE <i>COLOUR</i>	LED/MT	LUMEN/MT	DC
16 W	3000 K	120	2700	24 V
16 W	4000 K	120	2740	24 V
16 W	6000 K	120	2800	24 V

TRASFORMATORI COMPATIBILI <i>COMPATIBLE TRANSFORMERS</i>			
IP	CONSUMO <i>CONSUMPTION</i>	TENSIONE <i>TENSION</i>	DIMENSIONI <i>DIMENSIONS</i>
20	24 W	24 V	115,2x45xh30 mm
20	50 W	24 V	165x45xh30 mm
20	80 W	24 V	165x45xh30 mm
20	100 W	24 V	166x47xh30 mm

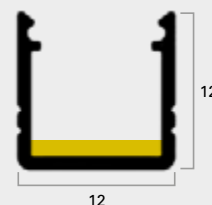
NOVA
MOOVE.ZEN



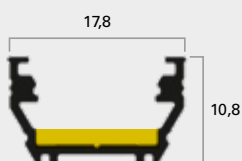
OLIMPO



ETNA



KAPPA



PROFILO <i>PROFILE</i>	Profilo verniciato nero - polycarbonato nero <i>Black painted profile - black polycarbonate</i>
STRIP LED	IP20 - 12W/MT 3000K-4000K-6000K 240 LED/MT 1540 Lumen/MT 24V
ACCENSIONE <i>SWITCHING</i>	ON/OFF
DETERMINAZIONE D'USO <i>INTENDED USE</i>	Indoor
INSTALLAZIONE <i>INSTALLATION</i>	Superficie <i>Surface</i>
FISSAGGIO <i>FIXING</i>	Staffa <i>Bracket</i>
DIMENSIONI <i>DIMENSIONS</i>	Led Etna 12x12 mm Led Olimpo 15x7,2 mm Led Kappa 17,8x10,8 mm

STRIP LED COMPATIBILI <i>COMPATIBILITY WITH LED STRIPS</i>				
W/MT	COLORE <i>COLOUR</i>	LED/MT	LUMEN/MT	DC
12 W	3000 K	240	1540	24 V
12 W	4000 K	240	1540	24 V
12 W	6000 K	240	1540	24 V

TRASFORMATORI COMPATIBILI <i>COMPATIBLE TRANSFORMERS</i>			
IP	CONSUMO <i>CONSUMPTION</i>	TENSIONE <i>TENSION</i>	DIMENSIONI <i>DIMENSIONS</i>
20	24 W	24 V	115,2x45xh30 mm
20	50 W	24 V	165x45xh30 mm
20	80 W	24 V	165x45xh30 mm
20	100 W	24 V	166x47xh30 mm