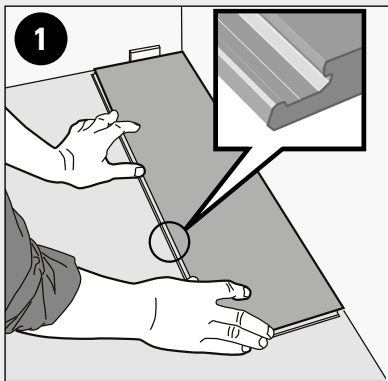
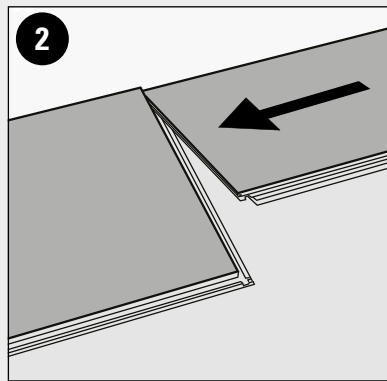


FIRST ROW



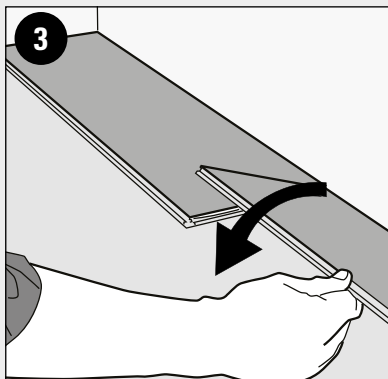
FIRST PLANK

Place the 15 mm spacer on the left and place the plank close to the wall but not against it. Then, after fitting three rows you can move the floor against the front wall while maintaining the planned perimeter distances.



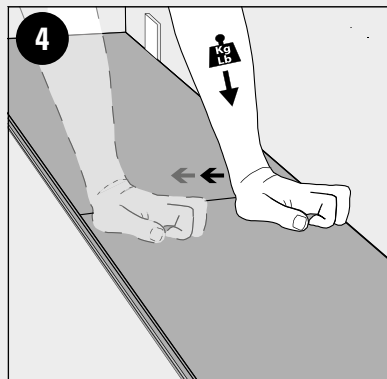
SECOND PLANK

Tilt the second stave horizontally and position it close to the short side of the first stave.



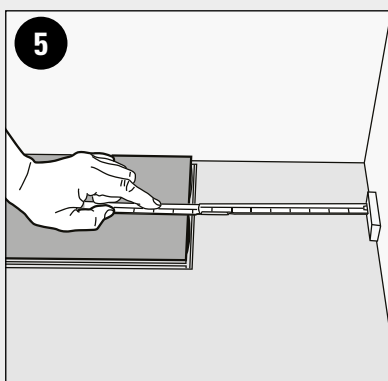
SECOND PLANK

It is important to start the jointing phase from the corner closest to the previous stave, then lower the stave to match the opposite corner as well. While tilting the stave down, make sure that the heads of the staves are in contact with each other.



SECOND PLANK

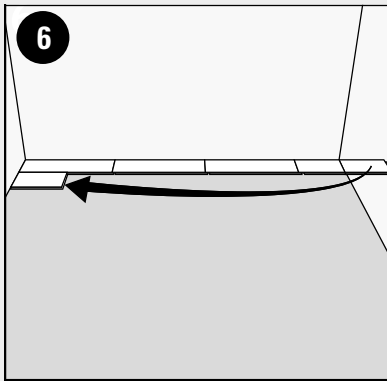
Next, apply pressure on the short side of the newly installed stave. you can tap with a rubber mallet using a stave trim to distribute the pressure of the impact.



SECOND PLANK

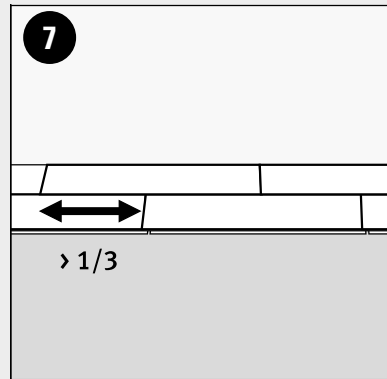
At the end of the first row, place a spacer on the wall and measure the missing space. Cut the last stave to size.

SECOND ROW



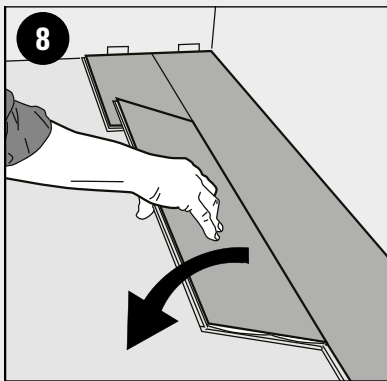
FIRST PLANK

Place the spacer on the left and place the stave close to the wall. The first stave of the second row must measure at least 400 mm.



FIRST PLANK

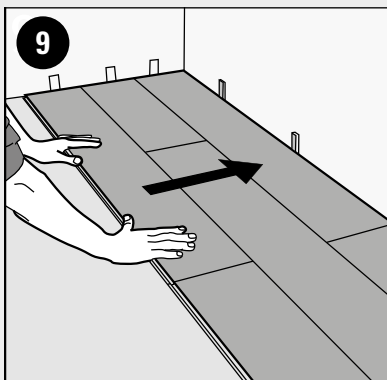
Stagger the staves, maintaining a distance between the short sides of the staves in parallel rows of not less than 1/3 of the length of the whole stave.



SECOND PLANK

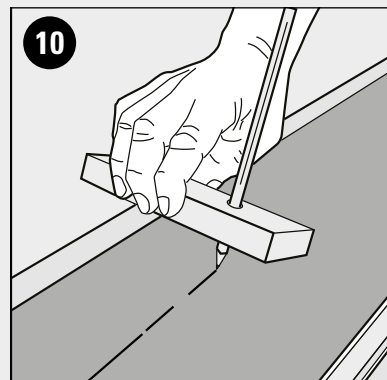
Position the second plank and interlock it to the first along the short side.

AFTER 2-3 ROWS

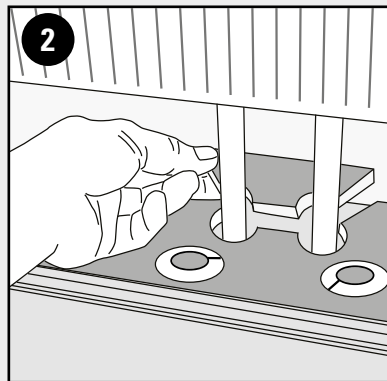
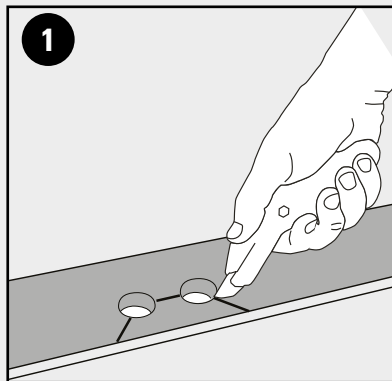


Push the installed planks towards the front wall on which the 15mm spacers were previously positioned.

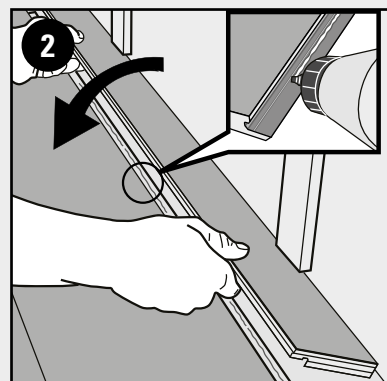
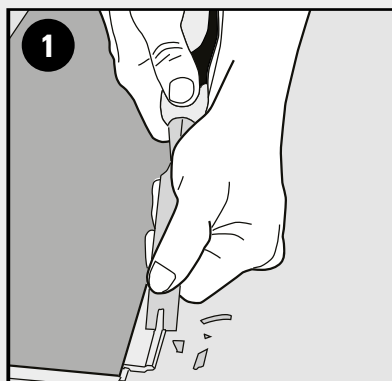
LAST ROW



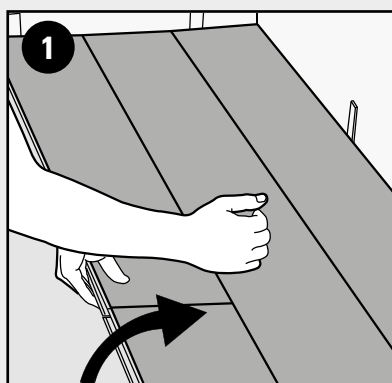
Place a spacer and measure the width of the surface to be covered. Cut the slats to size making sure you never have slats less than 50mm wide.

INSTALLATION AROUND RADIATOR / HEATING PIPES

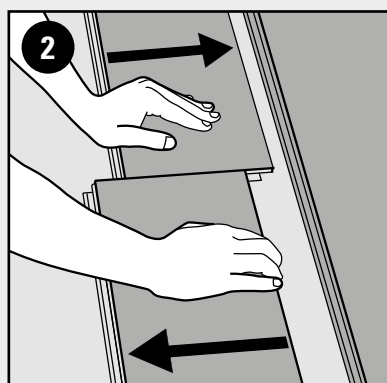
Drill holes at least 15 mm wide in relation to the diameter of the pipes. Remove a small section of stave in order to position the stave. Cover the remaining space behind the pipes with the section removed earlier.

WHEN ANGLING IS NOT POSSIBLE

Place spacers between the last plank and the wall. Remove the protruding portion of the joint from the long side of the plank already installed, apply glue to the joint and press the two planks horizontally together.

REMOVE A PLANK

Lift the entire row by carefully tilting it upwards. Slide up the long side.



Disassemble the individual slats by sliding them along the short side.

1. REQUIREMENTS FOR PROPER INSTALLATION

Each application and installation is different, so we strongly recommend that the customer contact an authorized dealer/installer to verify the requirements for proper installation and operation of the material.

The owner assumes responsibility for complying with all building codes.

- The environmental humidity of the rooms must be controlled and not exceed 60%. At the same time, the floor must always be protected by a vapour barrier in the event of rising damp, especially when laying on existing screeds or floors in underground rooms, basements and ground floors or raised floors above unheated rooms, for which the use of a vapour barrier is mandatory.
- The screed's residual humidity must be determined by measuring with a carbide hygrometer, as provided for by UNI 10329, carried out by a company specialised in the installation of wall coverings before installing, and the overall thickness must be:
 - $\leq 2\%$ in the case of concrete or special binding screeds, ($\leq 1.7\%$ for heating/cooling screeds),
 - $\leq 0.5\%$ in the case of calcium sulphate screeds (anhydrite) ($\leq 0.2\%$ for heating/cooling screeds).
- Substrates must be fully cured; the time required for this condition depends on the type of material and thickness with which they are made.
- The thickness of the screed above through pipes must be at least 3 cm.
- Clap! is perfect for any indoor setting, meaning rooms with four walls and a ceiling. For external areas, pergolas, sliding covering systems, outdoor dining and terrace areas with glass windows, we recommend using Déco products for the outdoors.
- During Clap! installation, all windows, doors, etc. to the outside must be installed and the indoor areas as ready-for-use as possible.
- The installation and use temperature should be between 15°- 30° degrees for the substrate, corresponding to about 18°- 30°C room temperature.
- The installation surface must be rigid and stable, as well as clean and dry. If this is not the case, action can always be taken to restore the substrate e.g. by using self-levelling compound. Déco provides specific products in cases where it is necessary to prepare the substrate in the best possible way. For more information, we recommend that you consult your dealer/installer.
- Clap! flooring will follow the shape of the surfaces on which it is installed, but it will manage to hide small imperfections such as small gaps between tiles (max 9mm wide and 3mm deep) thanks to the rigidity provided by the middle layer. Always check, however, that the joint does not fall on the joint; if it does, it will be necessary to fill such gaps with joint filler; there are also removable ones.
- In cases of unevenness $>1\text{mm}$, level the base or use self-levelling.
- Do not install Clap! flooring on flexible or elastic bases, such as intermediate floors or attics in flexible wood.
- Clap! flooring never requires an underlay since it is already integrated in the board.
- Installation that is not in compliance with one or more of the previous requirements is to be considered improper and voids the warranty.

2. PREPARING THE SURFACE

- Calculate the floor area of the room before installation and provide an extra 10% of flooring for cutting waste.
- Clap! boards must be stored on a flat, stable, dry surface.
- Never store this product outdoors. Installation must be carried out in accordance with Déco installation instructions.
- Make sure to choose the direction for the installation of the boards before beginning. Installing Clap! flooring parallel to windows and doors is standard practice.
- In a narrow area, such as the hallway, we recommend installing the boards oriented on the width of the room.
- Verify the space under the doors and under the door trim and frame before installation.
- Measure the room carefully to determine if it is square; if not, the last slat will need to be cut to fit the perimeter of the room. Measure the area to be installed. The width of the slat of the last row should not be less than 5.00 cm. If so, adjust the width of the first row to be installed.
- Decide which side of the room will have the last row of boards installed; generally, it looks better if the last row is on the most external side, opposite of adjacent rooms.
- Estimate the width of the last row of boards. In case it is less than 50mm, it is necessary to cut down the boards, so that the last row is wider than 50mm.
- The boards must be installed staggered cutting the first board of every row shorter, for example, with consecutive lengths of 300mm, 600mm, 900mm and lastly an entire board. Alternatively, the cut-off of the last board can be used as the initial piece of the next row. In any case, the head joints on adjacent rows must be distanced at least 300mm.
- The final piece of flooring must be at least 300mm long. To obtain this it is possible to cut the first board of the row. It is important to have an idea about these cuts before the last row is installed.
- Déco can provide accessories such as spacers, levellers for floors of different heights and baseboards.
- Clap! must not be installed near entrance areas which remain open for long periods and therefore are exposed to weather agents (sun, rain, day/night temperature ranges). We recommend using doormats at entrances up to where the sun reaches when the door is open.
- Always check for evenness before installing the materials verifying that there are no bumps over or equal to 2mm, measured by using a rigid metal bar that is 2 metres in length and measuring at least 5 positions on the screed. Pay particular attention to check in high traffic areas between various rooms and near corners of the various rooms.
- The Clap!3D and Clap!GO series are extremely resistant and suitable for any residential and commercial area, even high traffic, nonetheless, as per Clap!Real, they are not suitable for car and motorcycle traffic and pallet trucks.
- It is important not to fix boards with screws, nails or excessive loads $> 500\text{ kg}$ to allow expansion of the flooring. In the event that permanent fixing is essential, create a hole around the screw or nail to allow the flooring to expand.
- The maximum limit to avoid the use of expansion joints is 18 metres per side, in rooms with a constant temperature between 15 and 30 degrees for the underlay and without particular conditions preventing the movement of materials or worsening expansion. Contact the company if you have any doubts. The installation technician and job supervisor are responsible for verifying if additional joints are to be included under 18 metres evaluating actual site conditions.
- Our indoor flooring is suitable for installation on radiant heating/cooling systems thanks to the heat resistance of 0.030

(m² K/W) as specified in the technical sheets. In fact, in accordance with current requirements, the heat resistance of the flooring must not exceed the following value: $R_{\lambda,B} = 0.15 \text{ m}^2 \text{ K/W}$. In the case of installation on existing flooring, please verify the correct value given by the existing flooring and the Clap! flooring with your technician.

- For installation on transitional type radiant flooring systems, they must have pipes covered with at least 3 cm screed, use water as a heat conductor and ensure a constant room temperature of 18°C during acclimation, installation and 72 hours after installation; bearing in mind that humidity in the screed must be checked.

Subsequently, when the system is turned on, it must be gradually increased by a maximum of 5°C per day until standard temperature and operating conditions are reached; with a maximum temperature of 27°C.

- Electric heating mats not embedded in the subfloor are not recommended for use under flooring. Use of electric heating mats not embedded and applied directly under the flooring will void the warranty.

- Due to the speed in temperature changes which can have a negative effect on this flooring, we do not recommend installation on electric radiant heating systems.

- In cases of installation on dry radiant systems without screed, please contact our Technical Department for feasibility confirmation.

- We do not recommend the installation of Clap! in the vicinity of very intense direct heat sources such as stoves and fireplaces stoves, etc. In such cases it proceeds by protecting the floor with the installation of floor-saving footboards, interrupting the Clap! flooring in the vicinity of the footboard and inserting the necessary expansion joints.

3. INSTALLATION

- In most cases, this product does not need to be acclimatized. However, if the floor boxes have been exposed to extreme temperatures (below 10°C or above 35°C) for more than 2 hours in the 12 hours prior to installation, acclimatization is necessary.

In this case, it is necessary to keep the planks at room temperature for at least 12 hours in unopened packages before starting installation.

- The screed must be adequately protected from any causes of humidity both from the environment as well as any rising damp from the layers below.

- Before installation, the floor base must be perfectly smooth and planed. Small imperfections on the surface can be corrected with a belt sander, larger imperfections can be corrected with a standard levelling screed. The installation surface must act as a barrier for external humidity and be perfectly prepared before installing Clap! flooring.

- The customer must order a heating phase in order to obtain the suitable residual humidity suitable for installing the flooring (as per current requirements).

- In cases of installation on dry radiant systems without screed, please contact our Technical Department for feasibility confirmation.

- Wearing and using the proper protective and safety equipment is mandatory based on the current standards.

- Any carpet fasteners, nails and glue must be removed from the installation surface before starting.

- On pre-existing floors with grout lines, install the boards transversal to the actual grout lines.

- It is essential to avoid installation in incident sunlight, coming in through glass windows; protect the installation area with curtains.

- Use staves from different boxes - at least four - so that the same pattern is not combined side by side and a harmonious colour transition is achieved.

- Any strong colour shading is intended to enhance the realism of the staves themselves and is not to be considered a product defect.

- Our materials undergo quality control during the production process; nonetheless, the installation technician is responsible for checking the materials before installation.

- The installed boards will be considered accepted and compliant except for hidden flaws; any defect is to be reported before installation in a timely manner.

- Position the spacers on the perimeters or in proximity of fixed or heavy furnishings (e.g., kitchens, countertops, fireplaces, wardrobes, plasterboard walls, etc.) to allow for any possible contractions and expansions. Specifically, large weights must not compress the flooring and should be positioned directly on the unfinished base.

- The distance from the perimeters or fixed/heavy furniture must be evaluated based on the rules of expansion and the size of the board, approximately 8mm for Clap! GO wood finishes and 15mm for Clap! GO stone finishes, Clap! 3D and Clap!Real. The distance can be covered with baseboards or expansion joints, depending on the case.

- For Clap!3D, this distance is reducible to 8mm for flooring lengths up to 10.5m.

- The use of silicone under kickboards and in general is always to be avoided, choosing to use sealing trim or levelling joints. Nonetheless, only in specific cases and with proper caution, for example near sanitary fixtures, it is also possible to use 100% waterproof, high-elasticity silicones (like Mapei LM).

- Check that the laying base does not cause excessive friction with the pre-installed underlay, preventing proper expansion as required. In these cases, set a layer of cellophane or similar on the base on which to install the elements, to facilitate proper sliding.

- Start from a corner of the room with an entire row of boards. Consider that the last board will have to be cut to be adapted to the space at the end.

- The Clap! floor has a male/female click system; orient the planks so that the female is facing outwards from the installation side of the first row (e.g. female facing the wall male facing the installer).

- Continue along the line of boards to reach the opposite side of the room.

- When two boards are interlocked, first slide the board into the longitudinal insert, then slide the board to the cross-sectional interlock, use a rubber hammer on the side and click it on the head. Secure then the interlock system by using the rubber hammer on a flat surface (for example, an extra piece of board) positioned on the heads until you hear a "click" and the interlock is perfectly flat. There must not be any gaps or air between one board and the other.

- To facilitate the movement of the flooring, avoid gluing the base boards, or corners or skirting board, with glue or silicone directly onto the flooring. The baseboards are always to be installed slightly higher, minimum 1mm higher compared to the flooring.

- To cut a Clap! board a wood circular saw, with sharp blades, is sufficient,

- Position the cut part of the boards against the wall to hide the imperfections with the baseboard.

- Be very careful when cutting and laying a cut board because it may become very sharp.

- Once the flooring installation is complete, remove the spacers from the perimeters and install the baseboard being careful to position it slightly higher than the flooring avoiding the flooring from being blocked.

- Store any leftover boards for any future needs, storing them in a cool and dry place.
- In the event you need to remove a Clap! flooring board, lift it up carefully and at the same time from both ends of the interlock. This process facilitates the “unlocking” of the joint without damaging it.

For anything not explicitly stated in the installation instructions, cleaning instructions and maintenance instructions for Clap! available on the website www.decodecking.it via the QR Code printed on the material boxes or directly on the page www.decodecking.it/en/indoor-coverings/download/ in the section corresponding to the product, it is necessary to follow and comply with the design, installation and maintenance instructions as laid down in standard UNI 11515-1:2020 and any subsequent supplements.

BATHROOM INSTALLATION

Bearing in mind what was previously specified, here are some specific precautions for installation in these environments.

INSTALLATION NEAR SANITARY FIXTURES AND SHOWER CABINS

For a totally finished result, installing Clap! under the sanitary fixtures would be ideal, making sure to create a hole for the bolts used to fix the sanitary fixtures to the floor.

Please note that the hole must be wider than the circumference of the bolts by approximately 10-15mm so as to not prevent the natural expansion and contraction of the boards.

We recommend joining the Clap! flooring with the shower cabin with the use of suitable sealing trim. Alternatively, it is possible to use a 100% waterproof and high-elasticity silicone, the following precautions must be followed:

1. Providing for the use of expansion joints in separating the bathroom from other environments.
2. Outline the boards always taking into consideration the perimeter distance of approximately 8mm for Clap!GO wood finish and 15mm for Clap!GO stone finish and Clap!3D to be kept also for Clap! trim and sanitary fixtures.
3. Before installing the boards, first lay a layer of cellophane at the portion of the base near the sanitary fixtures to completely cover the air let out with the expansion.
4. Position the outlined boards ensuring the proper distance from the sanitary fixtures and filling this gap by using 100% waterproof and elastic silicone.

PLEASE NOTE: the silicone must not set on the base but on the cellophane previously applied. So, the natural expansion and contraction of the boards will not be prevented.

HIDING PERIMETER DISTANCES IN THE BATHROOM

Perimeter distances must always be observed- In the case of installation in bathrooms, there are two options for hiding them:

1. Covering perimeter distances using baseboards or sealing trim available in anodized aluminium or matched with the colour of the flooring.
2. If the walls have not yet been covered with tiles, the vertical wall covering can be interrupted at a sufficient height from the floor for the Clap! underneath..

SHOWER CABINS

By using the specific Clap!WALL for walls, it is also possible to cover the inside of the shower cabin. To carry out this type of installation, Clap!WALL must be glued on a base prepared with MAPELASTIC, or other waterproofing cement sheath.

INSTALLATION IN KITCHENS

The feet of the kitchen must not block the flooring; therefore, we recommend creating holes around the feet or cutting the flooring right before the feet (generally 60cm from the wall) so as to create an expansion joint before the feet.

This joint will then be hidden either with a T-trim when feet are visible or with a kickboard.

4. POST-INSTALLATION CHECKS

- Verify the proper distance on all perimeters and that the baseboards do not block the flooring at any point
- Be sure to protect the flooring from subsequent work or movement of loads which could scratch it (e.g. furniture installation) To move heavy objects on the flooring, like refrigerators, protect the flooring with at least two sheets of plywood, sliding the load on the plywood.
- Be sure to substitute any plastic wheels with rubber wheels in accordance with UNI EN 425 with W type wheels
- Ensure that in the event that interior doors are installed at a later time, boards and frames are to be installed suitably shimmed, so as to be slightly higher than the flooring without blocking it by 1mm.
- Do not use rugs with rubber or latex backing because they may stain and alter the colour of the flooring.

5. MAINTENANCE

- Sweep and vacuum away dirt regularly.
- Clean the floor using a vacuum cleaner with the specific brush being careful to not drag any small stones or dirt on the flooring; alternatively use a brush with soft bristles and electro-static, dust cloths.
- Wash the floor with a damp cloth, removing all excess water. Clap! is easily cleaned with a simple floor cleaner thanks to its thick, anti-wear and anti-stain layer. For a more intensive cleaning, the specific Clap! cleaner can be purchased through our retailers. Avoid detergents with solvents, bleach or ammonia.
- Do not use steam machines since they reach very high temperatures which can damage the flooring or leave difficult to remove rings.
- Waxes and polishes do not have any effect on Clap! flooring surface and may actually damage the surface, therefore, they should not be used.

- In case of stubborn dirt, use a mixture of water and mild soap. Remove the water with a cloth.
- In the event of continuous use of chairs with wheels, rubber wheels must be used (in accordance with current requirements) and not plastic or other material. If this is not possible, then protect the boards with specific flooring protective mats.
- Clap! is highly resistant to water and moisture, but in the event of a leak promptly wipe off the liquids as steam pressure from the subfloor has the potential to deform the planks.
- High traffic areas can be ruined more quickly, therefore, they must be cleaned and kept free of dirt residue frequently.
- Clap! flooring is highly resistant; like for any type of flooring, we recommend using felt pads under furniture, as well as avoiding objects or actions that may damage or scratch the surface.
- If you need to move heavy furniture, lift it while moving it, as to avoid damaging the surface of the flooring.

CLAP WALL

Clap! wall is the 3mm thick, mattress-less, jointless version that allows these planks to be glued directly to the wall as a cladding.

For bonding instructions, please refer to our instructions on in-glued cladding.

6. INSTRUCTIONS FOR REPLACING A BOARD

TOOLS

Glue, adhesive tape, pencil, tape measure, cutter, drill, circular saw, rubber hammer, new boards.

PREPARATORY PHASE

- To not damage the adjacent boards, cover the four corners of the board to replace with adhesive tape.
- With a drill, create a 12mm hole in every corner of the board, the closest possible to the joint lines.
- Use a tape measure to identify, in regards to the width, the central point of the board and trace a line dividing the board into two equal parts, along its length.
- Connect the holes to the central line drawing 45-degree diagonal lines from the corners to form triangles in each corner of the board. These lines will be used as a guide during the cutting phase.
- To avoid cutting the underlay, adjust the depth of the blade of the circular saw or cutter to the same thickness of the board.

CUTTING PHASE

- Start cutting the board along the centre using the line drawn previously as a guide.
- Continue cutting along the diagonal lines to connect the central cut to the holes made with the drill.

REMOVAL PHASE

- Use your hands to lift the central sections.
- Remove the remaining parts of the board by moving them gently back and forth.

REPLACEMENT PHASE

- After having removed the board, be sure that the underlay is perfectly clean and dry.
- Take a new board and, with the finished side up, cut the head and side interlocking notches sticking out a few millimetres.
- Apply a few drops of glue to the subfloor (vapour barrier, cellophane or nylon). If there is no vapour barrier immediately under the flooring insert a piece of cellophane or nylon at least 5/6 cm wider than the size of the plank to be replaced, taking care to fit it without any flaps underneath.
- First, position the board by placing it on a slant on the side from which the interlocking notch was cut; then, lower the board so the shorter sides are also positioned. If cellophane was added, the board can be glued directly on it.
- Using a rubber hammer, beat on the edges of the board until perfectly flat and the joint lines significantly reduced.
- Place weights positioned in a uniform manner on the new board for the next 24 hours.

PLEASE NOTE:

Replacing a board is only recommended in cases that compromise normal flooring use. Therefore, replacing a board is not recommended in cases of normal wear or use.

For ideal results, board replacement should be carried out by a professional.